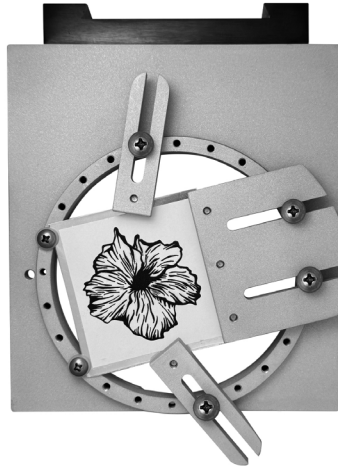


## Jayne's Slider Clamps for the Jayne Redman® Rotational WorkRing System

Watch the videos on [www.jayneredmanjewelry.com](http://www.jayneredmanjewelry.com), Jayne Redman Jewelry on YouTube and jayneredman on Instagram



Large and Small Slider Clamps

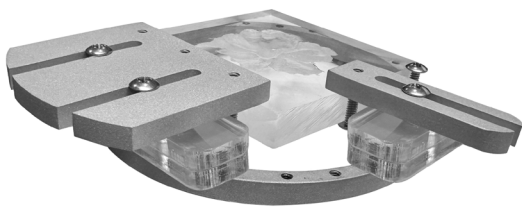


Front view of Jayne's Slider Clamps holding a sheet of silver within the WorkRing.

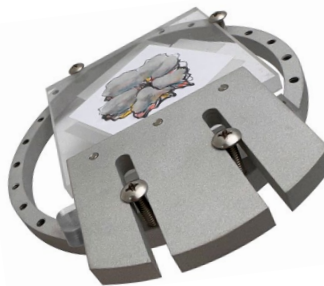


Back view showing screw heads clamped to the silver.

Jayne's Slider Clamps allow any size, shape, or thickness of material to be held securely within the 4.5" WorkRing of the Jayne Redman® Rotational WorkRing System, or the 2.5" Large Ring Circle Clamp, of the Swanstrom SawPlate System. Stainless-steel Phillips head screws hold the material under the edges of the screw heads on one end, while slots allow the clamp to slide freely between screws attached to the edge of the Ring, adjusting the holding position within the ring.



Jayne's Slider Clamps holding a sheet of 1/2" cast acrylic. Double the acrylic Slider Supports to support the sliding end of the clamps.



Jayne's Large Slider Clamp holding a sheet of 1/4" cast acrylic for carving a non-conforming die. Use a single long acrylic Slider Support under the sliding end of the clamp for support.

Screws provided are 14 - 1/4", 14 - 1/2", 7 - 5/8" and 7 - 7/8".

Use 1/4" to clamp and 1/2" to slide for thin material.

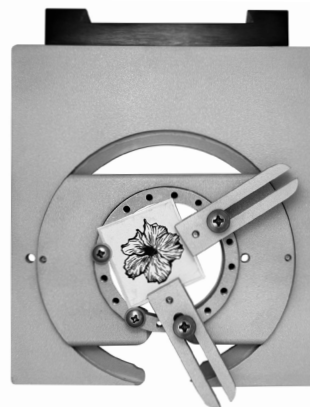
Use 1/2" to clamp and 5/8" to slide for 1/4" material.

Use 5/8" to clamp and 7/8" to slide for 1/2" material.

Cast acrylic Slider Supports provided:

2 pieces - 1/4" x 9/16" x 3"

4 pieces - 3/16" x 9/16" x 1-3/16"



The Swanstrom Circle Clamp Adaptor holds a Swanstrom Large Circle Clamp. A sheet of 26 gauge silver is held within it with Small Slider Clamps.