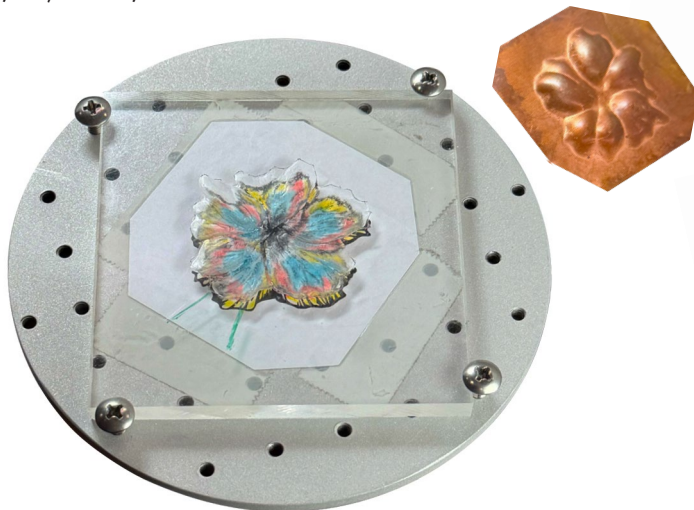
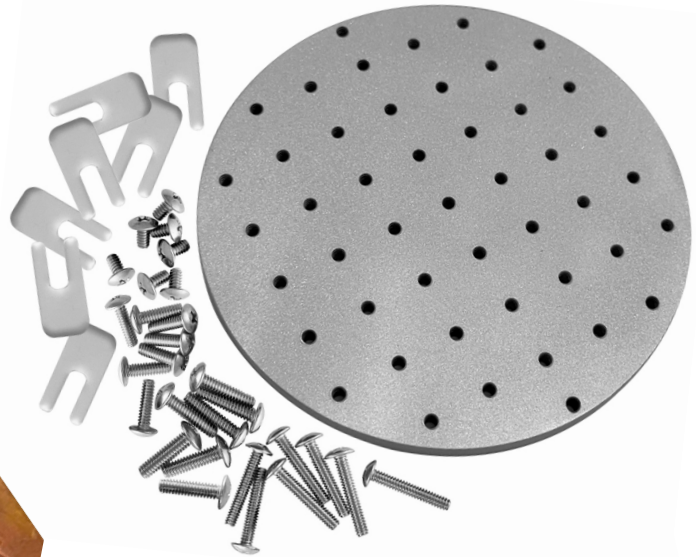


## The WorkDisc for the Jayne Redman® Rotational WorkRing System by Swanstrom USA

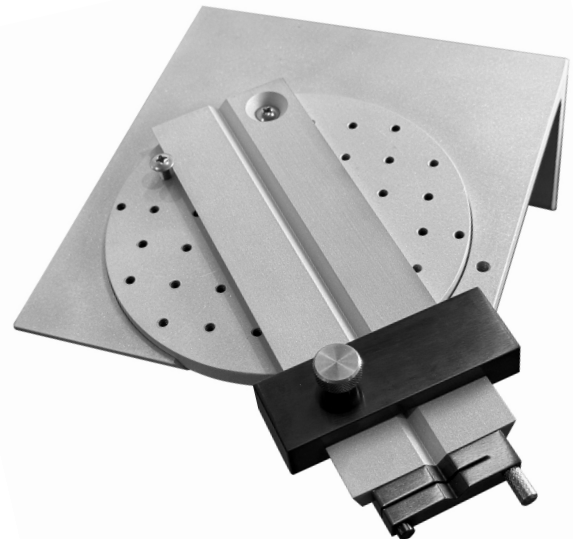
Watch the videos on [jayneredmanjewelry.com](http://jayneredmanjewelry.com) or Jayne Redman Jewelry on YouTube.

The WorkDisc gives solid support for holding material and objects. It rotates freely in the silicone lined circle depression in the WorkRing Base. It can be held stationary using the locking tab on the side, or screwing up from under the base, into two holes on opposite sides of the circle depression. Use two 1/4" Phillips head screws.

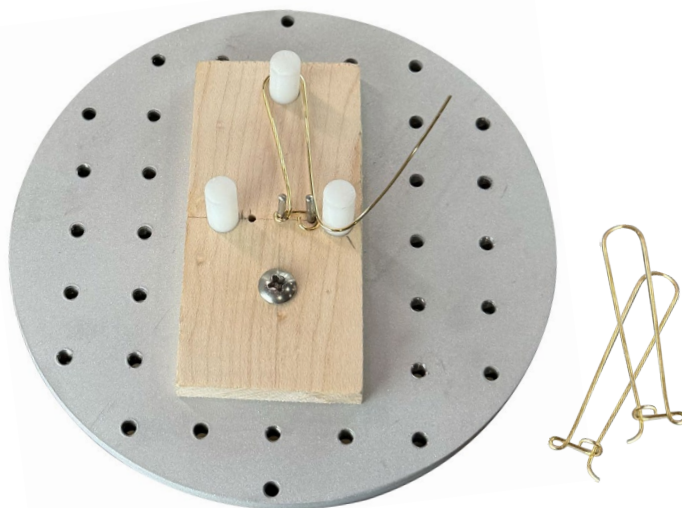
7 Small Slider Supports are included along with 7 of each size of screws: 1", 7/8", 5/8", 1/2", and 1/4".



Clamp to the edges of material with screws. I am using the WorkDisc, above, to hold my cast acrylic non-conforming die while carving the contours.



The WorkDisc is the perfect support for the Wire and Tube Cutting Jig. Slide a 1/4" screw through the hole in the Jig and screw it into the WorkDisc. Use a 1/2" screw on the side to hold the Jig firmly in position.



Drill into parts or material, then screw through the holes into the WorkDisc. Recommended size of drill bits is 9/64". Only one screw is needed to secure this earwire jig as I wrap the wire.

## The WorkFingers for the Jayne Redman® Rotational WorkRing System

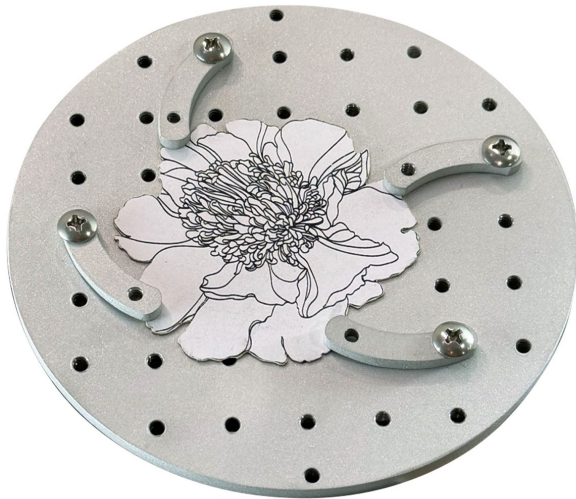
The WorkFingers can be used with the WorkDisc and WorkRing when you need a little extra holding help. 8 Small Slider Supports are included along with 8 of each size of screws: 7/8", 5/8", 1/2", and 1/4".

To use the WorkFingers, slide a screw into the large, unthreaded, hole in the WorkFinger and then screw into the WorkDisc or WorkRing.

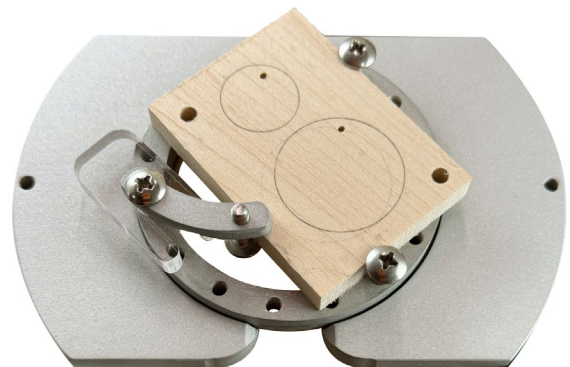
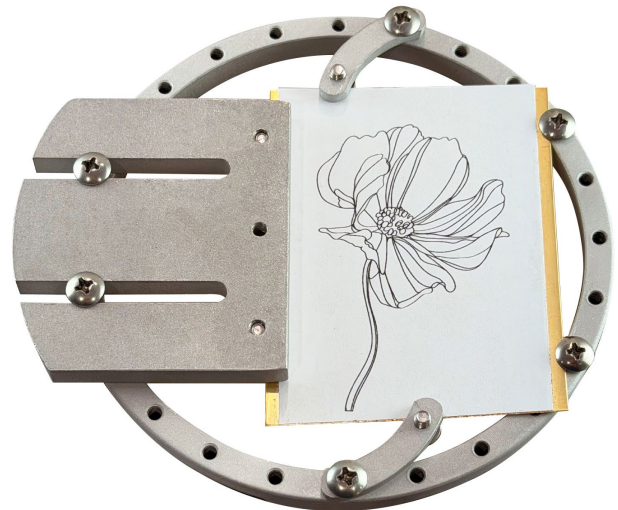
The screw should slide loosely into the large hole. Use a round file, if necessary, to enlarge the hole.



The WorkFingers are ideal for giving a little support in tight places. Below they are being used on the WorkRing along with the Large Slider Clamp.



WorkFingers and Slider Supports can be used as clamps when holes are not in correct alignment to be screwed into directly. Use the slot to move the Slider Support into position, then screw into the WorkDisc. Either end can be used as a clamp.



Use the Slider Supports under screws to hold thicker material with the WorkFingers.