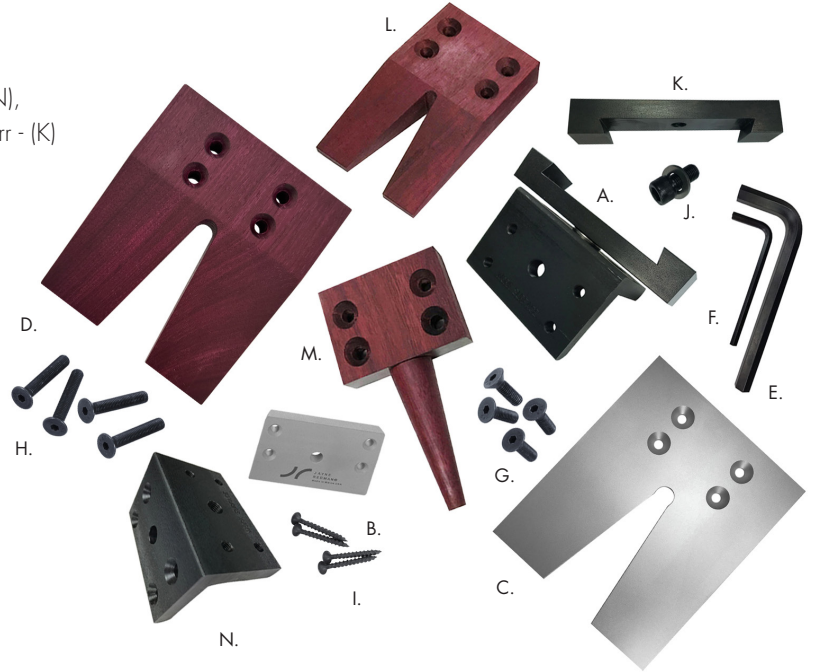




**J A Y N E
R E D M A N®**
Rotational Bench Systems

- A. Rotating Dovetail Adaptor Base - Universal Mounting Bracket - (N), attached with 3/8" socket head screw - (J) to a Dovetail adaptor - (K)
- B. Dovetail Mounting Plate
- C. Aluminum Work Surface, 5" x 6"
- D. Large Purple Heart Wood Work Surface - slanted side, 5" x 6"
- E. Large hex wrench
- F. Small hex wrench.
- G. Short flat head hex screws.
- H. Long flat head hex screws.
- I. Phillips head screws.
- J. 3/8" socket head screw with washer
- K. Dovetail Adaptor
- L. Mini Pin Purple Heart Wood Surface, 3" x 5"
- M. Ring Pin Purple Heart Wood Surface, 3" x 5"
- N. Universal Mounting bracket (work surface mount)



Assembly Instructions:

1. Dovetail Rotational Base, (A) is a combination of Universal Mounting bracket, (N) and Dovetail Adaptor, (K). It slides onto Dovetail Mounting Plate, (B) which attaches to side of bench with Phillips head screws (included with mounting plate). Use large hex wrench, (E) tightening or loosening the 3/8" socket head screw, (J), to adjust the angle position of the bench pin or to remove the Universal Mounting Bracket, (N). Turn hex wrench clockwise to tighten, counter clockwise to loosen.

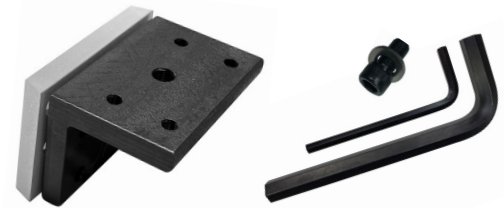
- The Dovetail Adaptor, (K) will fit any Dovetail Mounting Plate such as GRS®.

2. Attach aluminum work surface, (C) to mounting side of a Universal Mounting Bracket, (N), or Dovetail Rotational Base, (A) screwing short flat head hex screws, (G) into threaded holes. Tighten screws with small hex wrench, (F).

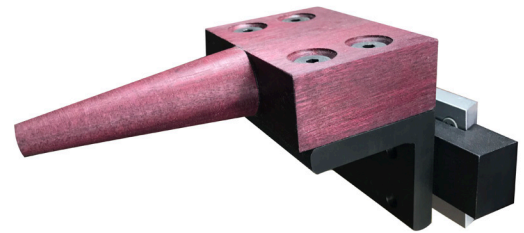
Or attach any purple heart wood work surface ((D), (L), or (M)) to mounting side of a Universal Mounting Bracket, (N), or Dovetail Rotational Base, (A), screwing long flat head hex screws - (H) into threaded holes. Tighten screws with small hex wrench, (F). Large and Mini Purple heart wood surfaces are two-sided, one side slanted - one side flat. Either side can be used as a work surface.

4. The Universal Mounting Bracket (work Surface Mount), (N) can be used as a Basic stationary side mounted base. The bench mount side, which has unthreaded holes that are countersunk, can be positioned against the side of your benchtop and attached by screwing the Phillips head screws, (I), through the four counter sunk holes. Any work surface can then be attached using the threaded holes on the top work surface side and flat head hex screws, (G) or (H), and the small hex wrench - (F). This bench pin configuration is not rotational.

5. The Dovetail Mounting Plate, (B) has a 3/8" threaded hole to directly attach a Universal Mounting Plate (Work Surface Mount) for rotation. Use the 3/8" Socket Head Screw and Washer, (J) provided with the Mounting Plate. Turn large hex wrench, (E), clockwise to tighten, counter clockwise to loosen.



1. Universal Mounting Bracket (Work Surface Mount) attached directly to a Dovetail Mounting Plate using the 3/8" socket head screw and washer provided. Screw any work Surface to it. This Base is Rotational. Use the Large hex wrench to loosen or tighten for rotation or to remove or exchange for a different Base.



2. Dovetail Rotational Base with Mini Ring Pin surface attached mounted on the Dovetail Mounting Plate.



5. A single Universal Mounting Bracket used as a basic stationary side mounted base. Mini Pin is attached.