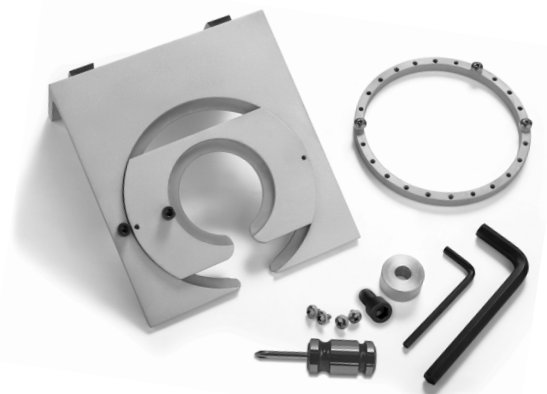


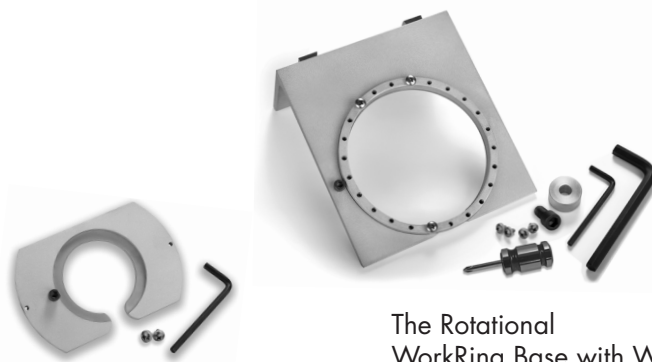
The Jayne Redman® Rotational WorkRing System by Swanstrom - Page One



The Jayne Redman® Rotational WorkRing Complete Set

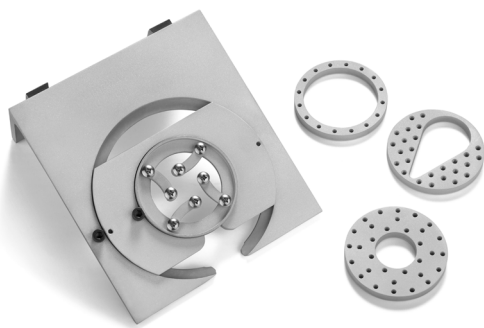
The Jayne Redman® Rotational WorkRing System by Swanstrom was designed by Tim Sheriff of Swanstrom Tools USA in collaboration with Jeweler - Educator Jayne Redman. The Complete Set includes the Rotational WorkRing Base with a 4.5" WorkRing, Clamp Adaptor, and Hardware. The Rotational WorkRing Base with WorkRing, and the Clamp Adaptor, are available as separate sets.

To use the WorkRing, slide material under the thumb screws or Phillips head screws, then tighten by hand or with the Phillips head screwdriver provided. Muscle fatigue and soreness are eliminated as the WorkRing securely holds metal or other materials, such as wood or plastic, while you saw, carve, texture, engrave, set stones, or utilize other metalsmithing techniques. The WorkRing rotates in a silicone lined depression allowing for smooth and accurate movement, or can be held stationary by turning the locking screw on the side, or screwing up into the Ring from the underside of the base. Easily attach or remove the WorkRing Base from a dovetail mounting plate on your bench. The WorkRing System uses a dovetail method of attachment that is compatible with any dovetail mounting plate such as GRS®.



The Rotational WorkRing Base with WorkRing

The Swanstrom Circle Clamp Adaptor



The WorkRing Base with Adaptor, Swanstrom SawPlate Circle Clamps and Gary's Clamp

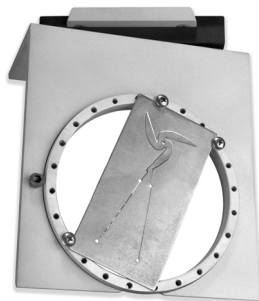
The Clamp Adaptor holds any clamp that works with The Swanstrom SawPlate System. The Clamp Adaptor is attached to the WorkRing Base by screwing from the back, through two holes in the Ring depression, and then into the Adaptor. *The Swanstrom SawPlate System, Swanstrom SawPlate Circle Clamps, and Gary's Clamp, are available exclusively through Rio Grande.*



The Dovetail Adaptor



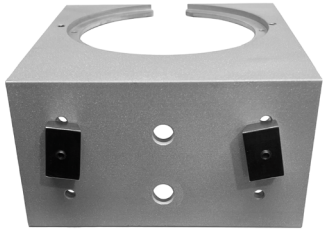
Jayne Redman® Dovetail Mounting Plate



The ability to rotate your sawing surface is essential for making blanking (pancake) dies. The Jayne Redman® Rotational WorkRing System is the perfect tool for that task. Use the included spacer and socket head screw to add a Jayne Redman® Dovetail Adaptor for rotation, or remove the dovetail cleats and screw directly into the dovetail adaptor. Attach the new Jayne Redman® Dovetail Mounting Plate to your bench and screw the WorkRing Base directly into it, eliminating the need of a dovetail adaptor for rotation. See Page Two for details about attaching the WorkRing System to your benchtop.

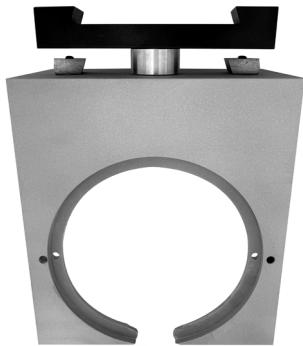


The Jayne Redman® Rotational WorkRing System by Swanstrom - Page Two



There are four ways to attach the Jayne Redman® Rotational WorkRing System to your bench.

1. Use the Small Hex Wrench to attach the two Dovetail Cleats. The four sets of holes in the back of the WorkRing Base allow you to adjust how high it will rest on the Dovetail Mounting Plate. This position is for stationary use and does not allow the WorkRing Base to rotate.



2. Slide the 1" Large Socket Head Screw, which comes with your Hardware Kit, into one of the large holes in the back of the WorkRing Base. Slide the Spacer on and attach a Jayne Redman® Dovetail Adaptor. Tighten and loosen the Large Socket Head Screw with the Large Hex Wrench for rotation.



3. Remove, or simply don't attach, the Dovetail Cleats. Slide the 3/4" Large Socket Head Screw, which comes with the Jayne Redman® Dovetail Adaptor, into one of the large holes in the back of the WorkRing Base. Slide on the thin washer and screw into the Dovetail Adaptor. Tighten and loosen the screw with the Large Hex Wrench for rotation.



4. Slide the 3/8" Large Socket Head Screw, which comes with the updated Jayne Redman® Dovetail Mounting Plate, into one of the large holes in the back of the WorkRing Base. Slide on the thin washer and screw the Large Socket Head Screw into the 3/8" threaded hole in Dovetail Mounting Plate. Tighten and loosen the Screw with the Large Hex Wrench for rotation or removal.



The updated Jayne Redman® Dovetail Mounting Plate. Use for direct attachment of the Jayne Redman® Rotational WorkRing Base.