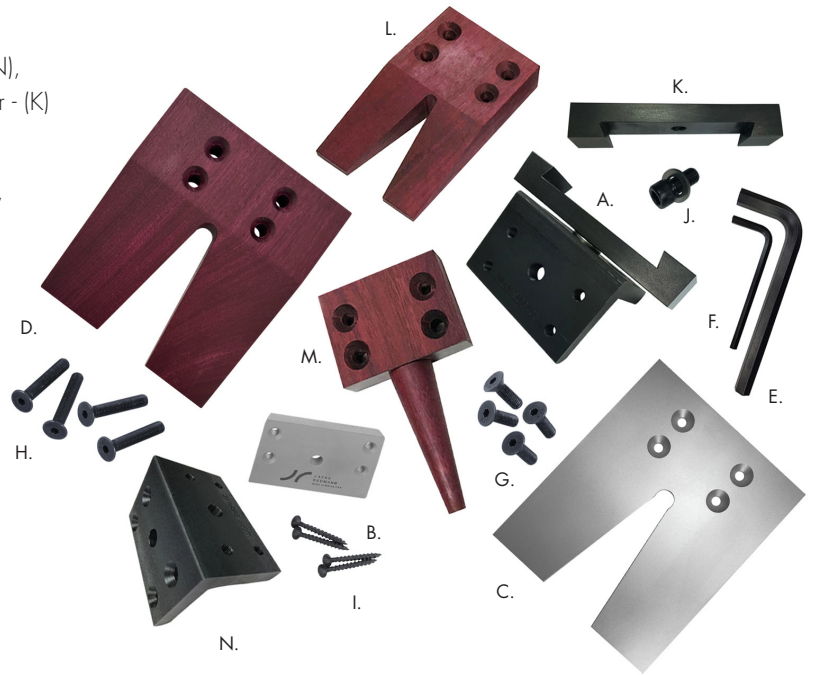


- A. Rotating Dovetail Adaptor Base - Universal Mounting Bracket - (N), attached with 3/8" socket head screw - (J) to a Dovetail adaptor - (K)
- B. Dovetail Mounting Plate
- C. Aluminum Work Surface, 5" x 6"
- D. Large Purple Heart Wood Surface showing slanted side, 5" x 6"
- E. Large hex wrench
- F. Small hex wrench.
- G. Short flat head hex screws.
- H. Long flat head hex screws.
- I. Phillips head screws.
- J. 3/8" socket head screw with washer
- K. Dovetail Adaptor
- L. Mini Pin Purple Heart Wood Surface, 3" x 5"
- M. Ring Pin Purple Heart Wood Surface, 3" x 5"
- N. Universal Mounting bracket (work surface mount)



Assembly Instructions:

1. Dovetail Rotational Base, (A) is a combination of Universal Mounting bracket, (N) and Dovetail Adaptor, (K). It slides onto Dovetail Mounting Plate, (B) which attaches to side of bench with Phillips head screws (included with mounting plate). Use large hex wrench, (E) tightening or loosening the 3/8" socket head screw, (J), to adjust the angle position of the bench pin or to remove the Universal Mounting Bracket, (N). Turn hex wrench clockwise to tighten, counter clockwise to loosen.

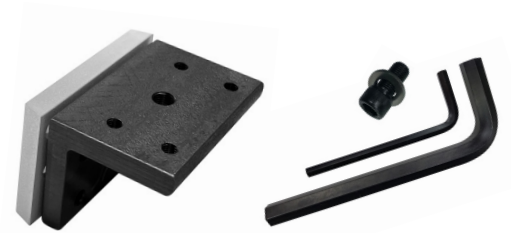
- The Dovetail Adaptor, (K) will fit any Dovetail Mounting Plate such as GRS®.

2. Attach aluminum work surface, (C) to mounting side of a Universal Mounting Bracket, (N), or Dovetail Rotational Base, (A) screwing short flat head hex screws, (G) into threaded holes. Tighten screws with small hex wrench, (F).

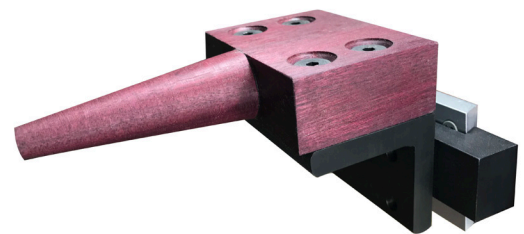
Or attach any purple heart wood work surface ((D), (L), or (M)) to mounting side of a Universal Mounting Bracket, (N), or Dovetail Rotational Base, (A), screwing long flat head hex screws - (H) into threaded holes. Tighten screws with small hex wrench, (F). Large and Mini Purple heart wood surfaces are two-sided, one side slanted - one side flat. Either side can be used as a work surface.

4. The Universal Mounting Bracket (work Surface Mount), (N) can be used as a Basic stationary side mounted base. The bench mount side, which has unthreaded holes that are countersunk, can be positioned against the side of your benchtop and attached by screwing the Phillips head screws, (I), through the four counter sunk holes. Any work surface can then be attached using the threaded holes on the top work surface side and flat head hex screws, (G) or (H), and the small hex wrench - (F). This bench pin configuration is not rotational.

5. The Dovetail Mounting Plate, (B) has a 3/8" threaded hole to directly attach a Universal Mounting Plate (Work Surface Mount) for rotation. Use the 3/8" Socket Head Screw and Washer, (J) provided with the Mounting Plate. Turn large hex wrench, (E), clockwise to tighten, counter clockwise to loosen.



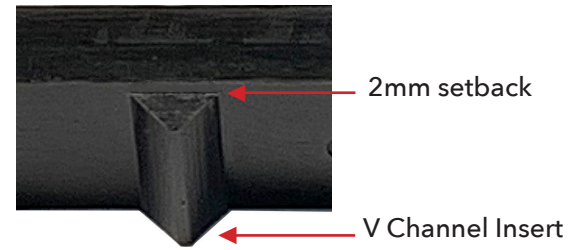
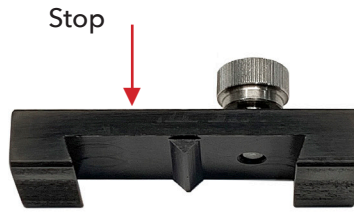
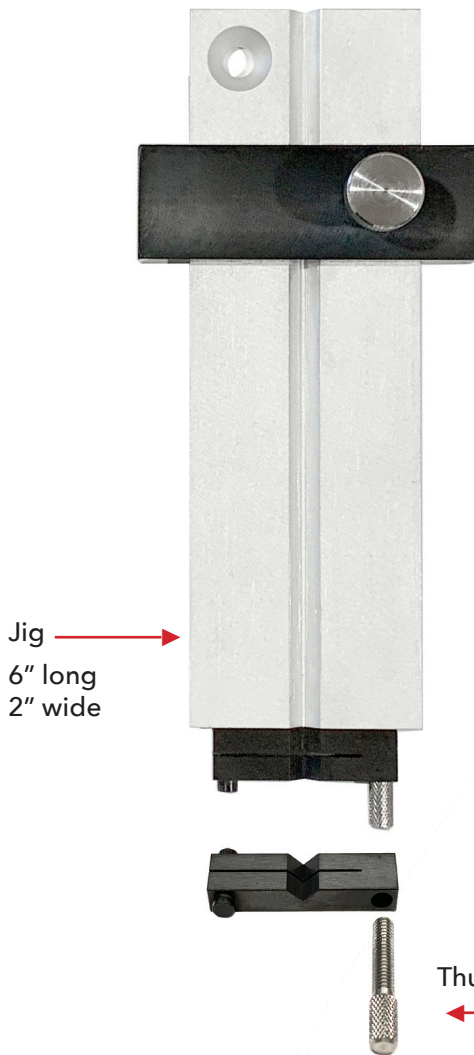
1. Universal Mounting Bracket (Work Surface Mount) attached directly to a Dovetail Mounting Plate using the 3/8" socket head screw and washer provided. Screw any work Surface to it. This Base is Rotational. Use the Large hex wrench to loosen or tighten for rotation.



2. Dovetail Rotational Base with Mini Ring Pin surface attached mounted on the Dovetail Mounting Plate.



5. A single Universal Mounting Bracket used as a basic stationary side mounted base. Mini Pin is attached.

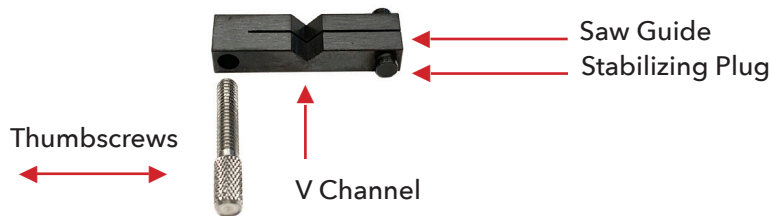


The photos above show the underside of the Stop. A 2mm setback in the V Channel Insert allows material of a smaller gauge to slide under the Stop and not slip up when the wire is cut. The opposite side of the V Channel does not have a setback and is flush with the face. Slide the Stop off the Jig and rotate it so the knurled knob is on the left. Slide the Stop back on the Jig. You will now be able to cut small gauge material to less than 2mm in length. Move the Stop up or down the Jig and screw down the knurled knob to set the length of material to be cut. For smooth movement of the Stop, push from the center.

The photo below shows the end view of the jig with the Saw Guide removed. Insert the Thumbscrew through the hole in the Saw Guide and screw it into the Jig lining up the Stabilizing Plug in the adjacent hole.

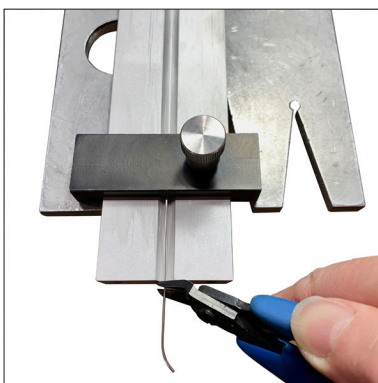


To saw from the opposite direction unscrew the Thumbscrew and insert it into the Saw Guide from the opposite end. Rotate the Saw Guide 180° with the V Channel on top and screw the Thumbscrew into the Jig.



Left handed and right handed positions of the Saw Guide.
Remove the Saw Guide to flush cut wire.

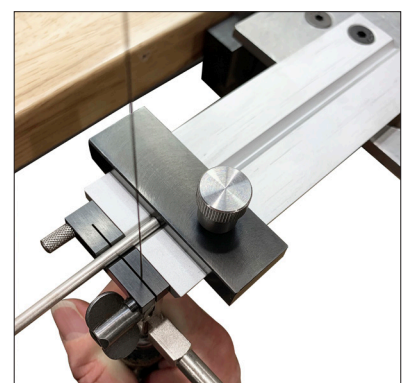
For hands free use: Screw through the beveled hole in the upper left of the Jig and into your bench. Or remove one of the screws attaching the Aluminum Surface to your Jayne Redman® Rotational Bench Pin. Use it to screw directly through both the beveled hole in the upper left of the Jig and the Aluminum Surface into the Rotational Base. Place the wire or tube into the V Channel and push it firmly with one hand against the Stop while flush cutting or sawing with the other hand.



Remove the saw guide to flush cut wire.



Sawing left handed. Jig mounted on Jayne Redman® Rotational Bench Pin for hands free use.



Sawing right handed.