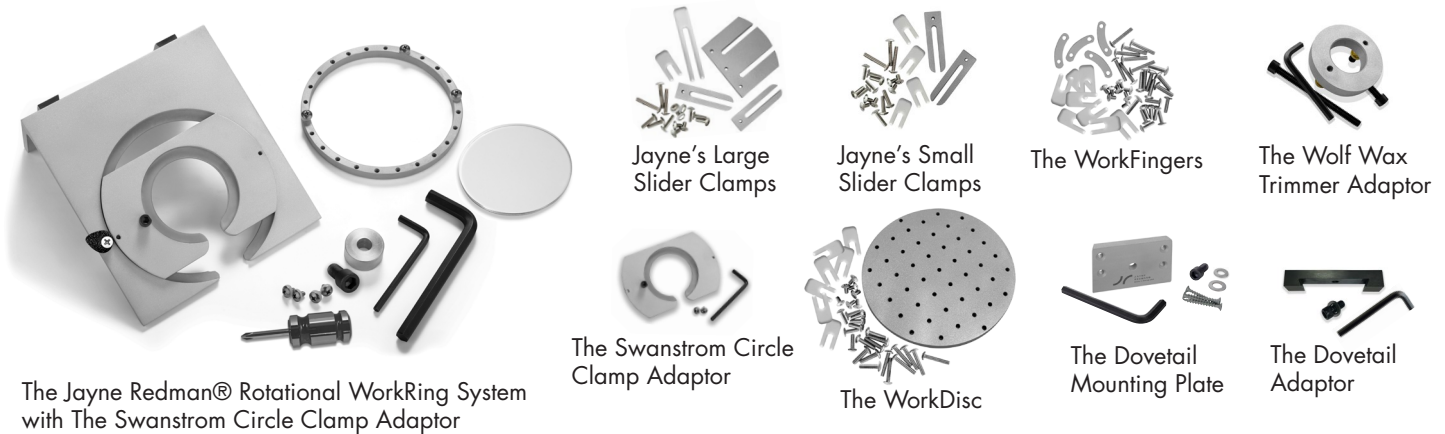


## The Jayne Redman® Rotational WorkRing System by Swanstrom - Page One

Watch videos at [www.jayneredmanjewelry.com](http://www.jayneredmanjewelry.com), Jayne Redman Jewelry on YouTube, or jayneredman on Instagram



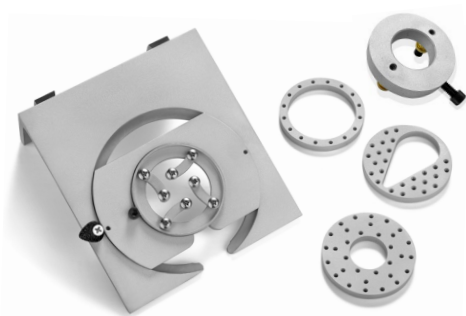
The Jayne Redman® Rotational WorkRing System by Swanstrom was designed by Tim Sheriff of Swanstrom Tools USA in collaboration with Jeweler - Educator Jayne Redman. There are two sets:

- The Jayne Redman® Rotational WorkRing System includes the WorkRing Base with a 4.5" WorkRing, and an Acrylic Disc. Hardware includes a screwdriver; two dovetail cleats with two 1/4" socket head screws for attachment; 8 - 1/4" Phillips head screws with washers; a small and large hex wrench; a 3/8" socket head screw with Spacer; and a Locking Tab with screw.
- The Jayne Redman® Rotational WorkRing System with Swanstrom Circle Clamp Adaptor includes all Hardware listed above, with the addition of the Swanstrom Circle Clamp Adaptor, 3/32" Hex wrench, 1/8" flat head hex Locking Screw, and two 1/4" Phillips head screws.

The WorkRing, the Swanstrom Circle Clamp Adaptor, the Dovetail Mounting Plate, the Dovetail Adaptor, Jayne's Large Slider Clamps, Jayne's Small Slider Clamps, and the Wolf Wax Trimmer Adaptor, are available as separate items. New Clamping accessories include the WorkDisc and WorkFingers.

To use the WorkRing, slide material under the Phillips head screws, then tighten with the Phillips head screwdriver provided. Muscle fatigue and soreness are eliminated as the WorkRing securely holds metal or other materials, such as wood or plastic, while you saw, carve, texture, engrave, set stones, or utilize other metalsmithing techniques. The acrylic disc replaces the WorkRing with a solid surface to set objects on.

The WorkRing rotates in a silicone lined depression allowing for smooth and accurate movement, or can be held stationary by either turning the Locking Tab on the side and tightening the screw, or screwing up into the Ring from the underside of the base with two 1/4" Phillips head screws. Easily attach or remove the WorkRing Base from a dovetail mounting plate on your bench. The WorkRing System requires a dovetail method of attachment. It is compatible with any dovetail mounting plate such as GRS®.

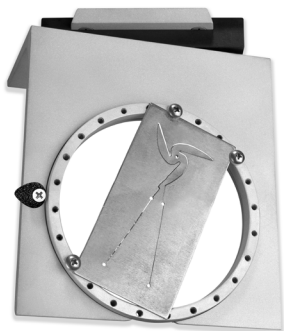


The WorkRing Base with Swanstrom Circle Clamp Adaptor, Gary's Clamp, Circle Clamps, and Wolf Wax Trimmer Adaptor

The Swanstrom Circle Clamp Adaptor holds any Circle Clamp that works with The Swanstrom SawPlate System. It attaches to the WorkRing Base by screwing from the back through two holes in the Ring depression with two 1/4" Phillips head screws, and then into the Adaptor. Screw the included 1/8" hex screw into the side of the Circle adaptor with the 3/32" hex wrench and turn the screw to keep the Circle Clamp from rotating.

The Wolf Wax Trimmer Adaptor fits into the Circle Clamp Adaptor and holds the Wolf Wax Trimmer, Wolf Adjustable Trimmer, Wolf Collar and the GRS® Adaptor for the Ikohe Belt Sander.

## The Jayne Redman® Rotational WorkRing System by Swanstrom - Page Two

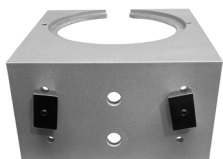


The ability to angle your sawing surface is essential for making blanking (pancake) dies. The Jayne Redman® Rotational WorkRing System is the perfect tool for that task. Use the included Spacer and longer Socket Head Screw to add a Jayne Redman® Dovetail Adaptor for swiveling, or remove the dovetail cleats and screw directly into the dovetail adaptor. Tighten and loosen the Large Socket Head Screw with the Large Hex Wrench to allow the base to swivel.

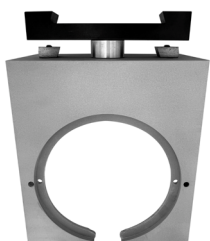


The Dovetail Adaptor

There are four ways to attach the Jayne Redman® Rotational WorkRing System to your bench.



1. Use the Small Hex Wrench and the two 1/4" socket head screws to attach the two Dovetail Cleats. The four sets of holes in the back of the WorkRing Base allow you to adjust how high it will rest on the Dovetail Mounting Plate. This position is for stationary use and does not allow the WorkRing Base to swivel.



2. Slide the longer 3/8" Large Socket Head Screw, which comes with your Hardware Kit, into one of the large holes in the back of the WorkRing Base. Slide the Spacer on and attach a Jayne Redman® Dovetail Adaptor. Tighten and loosen the Large Socket Head Screw with the Large Hex Wrench to allow the base to swivel. This method of attachment allows the user to keep the dovetail cleats in place while using the Dovetail Adaptor to swivel the base. To return to stationary use only, remove the 3/8" socket head screw, Spacer, and Dovetail Adaptor.



3. Remove, or simply don't attach, the Dovetail Cleats. Slide the 3/4" Large Socket Head Screw, which comes with the Jayne Redman® Dovetail Adaptor, into one of the large holes in the back of the WorkRing Base. Slide on the thin washer and screw into the Dovetail Adaptor. Tighten and loosen the screw with the Large Hex Wrench to swivel the base.



4. Slide the 3/8" Large Socket Head Screw, which comes with the Jayne Redman® Dovetail Mounting Plate, into one of the large holes in the back of the WorkRing Base. Slide on the thin washer and screw the Large Socket Head Screw into the 3/8" threaded hole in the Dovetail Mounting Plate. Tighten and loosen the Screw with the Large Hex Wrench to swivel or for removal.



The Jayne Redman® Dovetail Mounting Plate. Use for attachment of the Jayne Redman® Rotational WorkRing Base.